

# There Is a Green Hill Far Away

for 2-Part Men's Chorus with Flute and Piano

Text: Cecil Francis Alexander 1818-1895

Music: John Gower 1855-1922

arr. by BETSY LEE BAILEY

*Contemplative* ♩ = 88

Flute *mp*

Piano *mp*

1. There is a green hill far a-way with -

*mp*

PERFORMANCE TIME: approx. 3:00 min.

COPYRIGHT © 2022 Betsy Lee Bailey  
Copies may be made for non-commercial uses.

*mf*

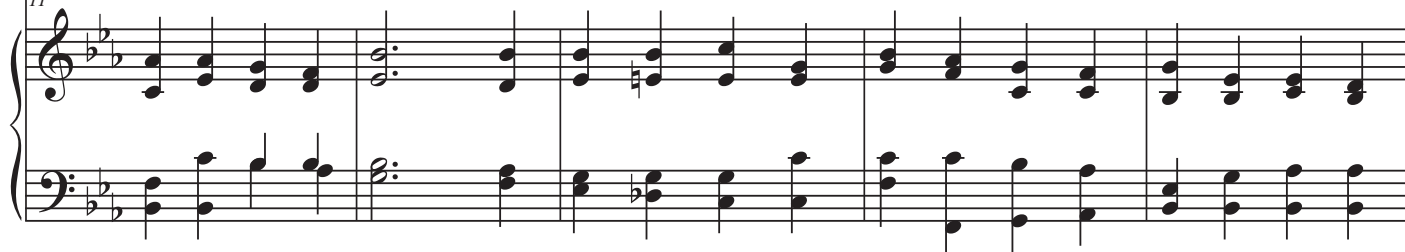
11



out a ci - ty wall, Where the dear Lord was cru - ci - fied, Who died to save us



11



16

*mf*

all. 2. We may not know, we can - not tell, what pains he had to bear. But



16



21



21



we be-lieve it was for us he hung and suf - fered there.



21



26

26

26

32

32

32

*mf*

3. There was no oth - er good e-nough to pay the price of sin. He

*mf*

Detailed description: This page of a musical score for the hymn 'There Is a Green Hill Far Away' contains measures 26 through 32. It features a vocal line at the top, two piano accompaniment staves in the middle, and a vocal line at the bottom. The key signature is B-flat major (two flats) and the time signature is common time (C). The piano accompaniment consists of chords in the right hand and a bass line in the left hand. The vocal line at the bottom includes the lyrics: '3. There was no oth - er good e-nough to pay the price of sin. He'. Dynamic markings of *mf* (mezzo-forte) are present above the vocal line and below the piano accompaniment. Measure numbers 26 and 32 are indicated at the beginning of their respective systems.

## There Is a Green Hill Far Away

37

on - ly could un - lock the gate of heav'n and let us in.

37

4. Oh, dear-ly, dear-ly has he loved, and we must love him,

mf

42

48

too. And trust in his re - deem-ing blood, and try his works to do.

48

53

A - - - men.

53